

Between the Lines

Volume 18, Issue 2

Summer 2017

American Lineback Cattle Registry Moratorium

- October 1st, - December 31st, 2017
- Must be a PAID member
- \$2.00 discount on registration for animals 12 months and under
- Half price registration for animals over 12 months
- Applicable to Classic White, Dark Sided, & Dark Speckled Witrick, Gloucester and Unmarked patterns

Don't miss this affordable opportunity to catch up on registrations for your Lineback herd!



2017 ALCR National Sale

April 8th, 2017 Kish Valley Dairy Sales

Top Cow: Lot 9 \$2,250 Creek-View Lineup Stella R748 (Junior 2)

Sire: Burket-Falls Line-Up-P-Rc Dam: Creek View B148

Consignor: Dale Pheasant Williamsburg, PA (Photo Right)

Top Heifer: Lot 16 \$1,325 Ayr-Back Jackson Tootsie Roll (Winter Calf)

Sire: Pocopson-Meadow Struts Jackson-Rc Dam: Ayr-Back 213

Consignor: Joe & Jesse Stowe Oxford, PA (Photo Lower Right)

Top Bull: Lot 35 \$1,700 Pocopson-Meadow BBH Justice

Sire: Kuszmar Blueberry Hill-Rc Dam: Pocopson-Meadow Cash Gen-L

Consignor: Barnard Baily West Chester, PA (Photo Bottom Left)

Total: Cows- 19 head, Heifers- 15 head, Bulls- 7

Total Sale Volume: \$52,875 Sale Average: \$1,289

Thank you to the Sale Staff and Sale Committee for their selection of quality Linebacks and time! Thank you to the consignors for making your Linebacks available and thank you to all the bidders and buyers!

Congratulations on a Successful Sale!



Inside This Issue

- Submitting Lineback Show Results
- 2017 Lineback Shows
- Classification Highlights 2016
- Sale/Sale Day Highlights
- Bull Feature: KAG'S Chocolate Brook Orion

Where to Find Lineback Semen

- Private Breeders
 - ST Genetics (800)525-2953
 - J-Nep Shotline Devin
 - Plenty-Good Theo Top-Red
 - Global Genetic Resources (866)790-2855
 - Kingly RF
 - Murphy
 - CRV USA (608)441-3202
 - Jack

Donation Calf

Thank-you to Tim and Sue Bealmear, Fawn Grove, Pennsylvania for donating a bull calf to the National Sale. The proceeds of TWB's Red Patrick-P, went to benefit Future Junior Shows!

TWB's Red Patrick-P, a Dark Sided Witrick was born March 10th, 2017. He is sired by TWB's Red Maverick and his dam is TWB's Allie's June, both Dark Speckled Witricks. **Thank-you for your Support! -Juniors**



Presidents Message

Hello Lineback Enthusiasts,

It's that busy time of year again with crops, cattle sales and shows. I hope that all of you are making out well with crops. It has been very wet, with short windows to get into the field here in southeastern Pennsylvania.

Our annual sale and meeting were great. The sale was actually phenomenal considering the shape the dairy industry. Kish Valley Dairy Sales welcomed us with open arms and there was a great turn out. Thank you to everyone that helped, consigned, and bought animals. It seems there is still a high demand for these beautiful stripped cattle.

Also, I would like to welcome Kaitlyn Gelsinger and Andrew Snook to the Board of Directors. Both of these individuals have a great love for the Lineback breed and will make great additions to the Board. I would also like to Thank and recognize Ruby Bollinger for her 6 years of commitment, time and insight as a Director as well as Keith Brunner for his time being an interim Director.

The Registry has come a long way and we are continuing to make strides of improvement for our Breed, helping to bring it up to speed with current times of the dairy industry. We are looking forward to giving breeders more options and advancing record keeping.

Finally, thank you for sharing the love of the Lineback and I look forward to working with you throughout the next year.

Regards,

Joe Stowe

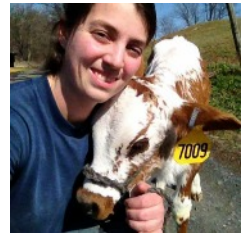
ALCR President



Meet the New Directors

Kaitlin Gelsinger- Robeson, Pennsylvania

Hello! I am excited to serve as a member of your board to represent you and your Lineback ideas! I am from Robeson, PA where I live and work on my parents' dairy farm, Gel-Bare Farms. My passion for agriculture led me to the University of Wisconsin-Madison where I received my bachelor's degree in Dairy Science in 2014.



On our farm, we have about 300 cows and we raise all of our young stock, including steers for market. I began my journey with Linebacks in 2004 when I bought my first calf privately and then attended the National Sale in 2005 where I purchased a red and white bred heifer. Since then my Lineback herd has slowly grown. I currently have 20 Linebacks in the herd. Over the last 13 years, I have grown to love this breed, not only for their color, but also for their personalities and productivity. I hope to make a positive difference during my time on the board! Please let me know if you have any concerns you would like us to discuss!

-Kaitlin Gelsinger

Andrew Snook- Middleburg, Pennsylvania

Andrew became a member in 2013, after the purchase of his first lineback in 2011. Andrew and his family purchased the herd from his father in May of 2013 where they milk around 55 cows. Andrew shows at the Beaver Community Fair, Beaver Springs, Pennsylvania.

-Andrew Snook



American Lineback Cattle Registry

Officers

President- Joe Stowe
Oxford, Pennsylvania
(240)-304-5735
jjstowe.44@gmail.com

Vice President- Marjorie Kuszlyk
Batavia, New York
(585)-343-4800
kuszlykcattleco@yahoo.com

Secretary- CarolAnn Bashore
Lebanon, Pennsylvania
(717)-865-7900
dcbashore@comcast.net

Treasurer- Don Bashore
Lebanon, Pennsylvania
(717)-865-7900
dcbashore@comcast.net

Board of Directors

Kaitlin Gelsinger
Robeson, Pennsylvania
(610)-488-1266
k.gelsinger@yahoo.com

Nedra Koller
Shoemakersville, Pennsylvania
(610)-926-1523
jenrkoller@frontier.com

Jill Kopfer
Blandon, Pennsylvania
(610)-587-9877
missmyline@hotmail.com

Evan Nickerson
Albion, Pennsylvania
(716)-237-0334
sweetdreamdairy@gmail.com

Randy Quesnel
North Ferrisburgh, Vermont
(802)-349-8520
rmquesnel@yahoo.com

Andrew Snook
Middleburg, Pennsylvania
(570)-765-4787
cjandrewcv@gmail.com

Jesse Stowe
Oxford, Pennsylvania
(240)-304-5735
jjstowe44@gmail.com

Newsletter Editor

Deidra Bollinger
Elizabethtown, Pennsylvania
(717)-342-4882
betweentheelines1985@gmail.com

How To Submit Lineback Show Results

Submitting Show Results, Awards and Recognition:

Looking for everyone to send in Summer Show Results! This year we are looking for a representation of all Lineback exhibitors competing at a show. Forms will be available online as well as by request to submit the Show's Lineback Results. Be sure to include pictures too!

See Example of Form Below:

Name of Show:		Submitted By:	
Date:		Phone Number:	
Judge (Name: City, State)		Email:	
Number of Entries	Number Exhibited	Select: Youth Show / Open Show	
Class Name	Entry Name	Exhibited By	
Spring Calf:			
Total Entries in Class:			
Winter Calf:			
Total Entries in Class:			
Fall Calf:			
Total Entries in Class:			
Summer Yearling:			
Total Entries in Class:			
Spring Yearling:			
Total Entries in Class:			
Winter Yearling:			
Total Entries in Class:			
Fall Yearling:			
Total Entries in Class:			
Jr. Champion:			
Reserve Jr. Champion:			

Editors Corner

Fellow Lineback Breeders,



Summer is upon us, it's hard to believe 2017 is nearly halfway over! My busy schedule has kept me on my toes as always, as well as the many volunteer hours I put into the Newsletter. This is probably my favorite newsletter to work at putting together, as I can see how the Lineback influence has grown in the number of shows Linebacks can participate in. It's exciting to me to let you know I was able to double the number of fairs listed this year compared to last year. I began compiling a list in March, and have spent numerous hours contacting fairs in Pennsylvania, Maryland, Virginia, New York, Vermont, New Hampshire, Massachusetts and Wisconsin. After weeks of correspondence and many emails exchanged, I can say I was able to list more than 60 Fairs or Dairy Shows who would love to see our breed represented! A special thank-you to those who responded to my Facebook request for your local shows who have lineback classes, it truly helped to make things a little easier. In addition to listing Lineback eligible shows, this newsletter is packed with updates from the sale and other activities that took place during sale day, and things were finally able to come together to listed classification results from 2016. I hope you've had some time to finger through the newsletter, noticing the upcoming moratorium starting in October. I highly encourage you to take advantage of this for your herd of linebacks including those without a pattern, because they can still have offspring with patterns! Again, it has been a pleasure to work with individuals who want to see Linebacks keep moving forward! Good luck at the Shows! Keep in touch and share your news on the ALCR facebook!

-Deidra Bollinger

American Lineback Cattle Registry

General Membership Meeting

The 2017 General Membership Meeting, held after the National Sale in Belleville on April 8, 2017, was attended by about 25 people. President Joe Stowe welcomed everyone and thanked them for coming to the sale and remaining for the meeting. Secretary, treasurer and registrar reports were given, please contact CarolAnn Bashore (717)865-7900 if you need a copy.

Committee reports were given: highlights include: Junior Show has regional show packets available for an area interested in hosting a Junior Show, the packet includes committee responsibilities and offers samples of record keeping, contact CarolAnn Bashore for packet; Breed Promotion has t-shirts and bumper stickers available, contact Randy Quesnel (802)349-8520; Breed Outlook handed out breed standards, information will be accessible on website with pictures or contact Jill Kopfer (610)587-9877. Also, members are encouraged to genetic test animals for A2, as the market is growing in this area. Classification scorecard is going to be revisited again, and adjusted to be accepted by the CDCB (Council on Dairy Cattle Breeding). Additionally, for Lineback production records to be recorded with the CDCB for genetic evaluations, your herd must be on Official Testing and be recording via the DHIR instead of DHIA for further information contact Dennis Russell (816)738-4179. ST Genetics is continuing to look for Lineback bulls.

Members were reminded; Composite Registry is following ALCR guidelines: No registration papers will be released until required photographs are provided and full payment has been received. The ALCR will be running another registration moratorium October 1st–December 31st, 2017 to build an accurate data base, members are encouraged to register their “OCP-off colored pattern” during this time allowing animals pedigrees to be more complete as generations develop.

Newly elected Board members are: Andrew Snook and Kaitlin Gelsinger, Officers were all re-elected for another term. ALCR thanks Ruby Bollinger for her 6 years of service and Keith Brunner for his time on the Board.

Registration Rates

The current registration fees are based on the age of the animal. Below you can see it is very cost efficient to be a member.

Animal Age	Member	Non-Member	
0 to 6 Months	\$ 8.00	\$ 16.00	PLEASE MAKE CHECK(S) PAYABLE TO ALCR .
6 to 12 Months	\$ 10.00	\$ 20.00	
12 to 24 Months	\$ 14.00	\$ 28.00	Mail to: Dennis Russell ALCR/Dairy Cattle Registry P.O. Box 118 Bulter, MO 64730
24 Months & Up	\$ 20.00	\$ 40.00	
Transfers	\$ 5.00	\$ 7.00	
Duplicate or Reprints	\$ 5.00	\$5.00	
Rush Fee (Anything less than 30 days)	\$ 10.00	\$10.00	

NOTE: Membership MUST be current to register your animal at member rates.

Classification Schedules & Information

2017 Classification Tour

Month	Area	Applications Due
January	KY, TN, NC, SC, GA, FL, AL, MS, LA, AR, MO, OK, TX	11/15/16
February	WI	12/15/16
March	CA, OR, WA, ID, MT, WY, NV, UT, CO, AZ, NM	1/15/17
April	IN, MI, OH, WV	2/15/17
May	NY, ME, NH, VT, MA, CT, RI	3/15/17
June	MN, ND, SD, IA, NE, KS, IL	4/15/17
July	PA, NJ, DE, MD, VA	5/15/17
August	KY, TN, NC, SC, GA, FL, AL, MS, LA, AR, MO, OK, TX	6/15/17
September	WI	7/15/17
October	CA, OR, WA, ID, MT, WY, NV, UT, CO, AZ, NM	8/15/17
November	IN, MI, OH, WV	9/15/17
December	NY, ME, NH, VT, MA, CT, RI	10/15/17

For more Information Contact: Brown Swiss Association, Classification Coordinator: Kathi Brown-Meier

kbrown-meier@brownswissusa.com

<http://www.brownswissusa.com/>

800 Pleasant Street Beloit, WI 53511

Phone: 608-558-8089

Fax: 608-365-5577

American Lineback Cattle Registry

Featured Bull

Orion

Both Photos on Left- Yearling
Both Photos on Right- Calf



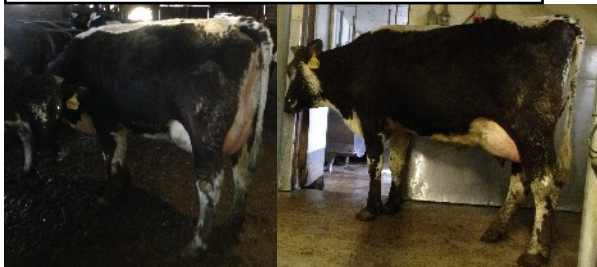
KAG's Chocolate Brook Orion

DOB: 09/23/2012
120LD2294 Dark-Sided Witrick
Registration #: 008763



(Above) Galaxy in her 5th lactation

(Below) Offspring: 2 milking daughters,
projected 2 year old records: 15,000
17,000 3.4-3.7F 3.0-3.4P (305d)
None have seen a classifier yet



Offspring Shown: KAG's Orion Estela
1st Place Fall Calf at the 2016 Reading Fair

S: R N R Payoff Brookings-ET

Registration #: 198772
Brown Swiss

S: Triangle Acres Po Payoff-ET

Registration #: 193627
Brown Swiss

D: R N R Denmark Brooke

Registration #: 886577
Brown Swiss

D: KAG's Chocolate Galaxy
EX-92, 91-MS

Registration #: 005892
Dark-Sided Witrick
Mature records of 28,000
32,000 lbs. (305d.)

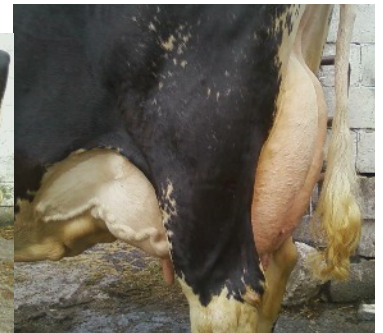
Galaxy was Grand Champion
Lineback at the Reading Fair
2008-2011 and Kutztown Fair
2008-2009

S: C & A Cash

Registration #: 002446
Dark-Sided Witrick

S: KAG's Hope
Brown Swiss/Holstein

Sire: Betta Vue Emory Prelude-ET



(Above) KAG's Chocolate De Snickers
Maternal Sister to Orion:
EX-90, 90-MS as a 3 year old
3 year old 305 days- 30,000 lbs of milk

Breeder of Orion:

Kaitlin Gelsinger

Robeson, Pennsylvania

Limited Semen is Still Available

Contact Kaitlin:

(610)488-1266 k.gelsinger@yahoo.com

***Get your hands on Orion
while Supplies Last!***

American Lineback Cattle Registry

2017 Sale



American Lineback Cattle Registry

2016 Classification Scores

Congratulations breeders on a great year of classifying! In 2016 more than 75 Linebacks were reviewed by classifiers, below is a list of High Scoring 2 Years Olds (scored 85 points or more as a 2 year old) and Cows Scored Excellent (scored 90 points or above, noting some individuals may have received Excellent designations in previous years). This was made possible by collaborations with the Brown Swiss Association, Composite Dairy Cattle Registry and Newsletter Editor.

Listed alphabetically by Current Owner/Farm

<i>2016 High Scoring 2 Year Olds</i>		
Ayr-Back Pro Seahawk	Ayrback Farm	Oxford, PA
Ayr-Back Woolf Leslie-Red	Ayrback Farm	Oxford, PA
Ayr-Back Marco Cupcake-Rc	Ayrback Farm	Oxford, PA
Ayr-Back Quarterback-Rc-Ocp	Ayrback Farm	Oxford, PA
Kuszmar Mist Her Que-Ocp	Kuszmar Farm	Batavia, NY
Kuszmar Mud's-A-Flyin-Rc	Kuszmar Farm	Batavia, NY
Myline Hourmet Milan 752-Red	Myline Ayrshires	Blandon, PA
Peek-A-View Allstar Electra-Red	Peek-A-View Farm	Bernville, PA
Plenty-Good Theo Prestige-Rc	Plenty-Good Dairy	Annaville, PA
Plenty-Good Ivan Gonna-P-Red	Plenty-Good Dairy	Annaville, PA
Plenty-Good Pro Elite-Red	Plenty-Good Dairy	Annaville, PA
Plenty-Good Cashflow Downy-Red	Plenty-Good Dairy	Annaville, PA
Pretty-Stitches Jitterbug-Red	Pretty Stitches Linebacks	Elizabethtown, PA
Lyn-She Mystic Peppermint	Schwenk, Shelia	Annaville, PA
Lyn-She Pro Fantasy	Schwenk, Shelia	Annaville, PA
Cedar-Red LR 1967Red	Schwenk, Shelia	Annaville, PA
Lyn-She Appollo Lace	Schwenk, Shelia	Annaville, PA
<i>2016 Cows Scored Excellent</i>		
<i>*may previously have scored 90 or above</i>		
Keri-Okie Allstar Alexandra	Alan Jennings	Pryor, OK
Ayr-Back Mystic Naomi-Rc	Ayrback Farm	Oxford, PA
Dreamnol Perseus Leandra	Dreamnol Ayrshires	Cochranville, PA
Three-Rivers Amazing Ava-Red	Gel-Bare Farms	Robesonia, PA
Kuszmar Kraby Abby	Kuszmar Farm	Batavia, NY
Kuszmar Allstar Alexandra-Red	Kuszmar Farm	Batavia, NY
Richmond-FD Firefly	Kuszmar Farm	Batavia, NY
Myline Sanchez Real 658	Myline Ayrshires	Blandon, PA
Myline Cosmo Rebel 4 th	Myline Ayrshines	Blandon, PA
Myline Atwood Pixie 703	Myline Ayrshires	Blandon, PA
Plenty-Good Advent Evie-Red	Plenty-Good Dairy	Annaville, PA
Ayr-Back Herce's Spot-Rc	Plenty-Good Dairy	Annaville, PA
Plenty-Good Johnny Priscilla-Red	Plenty-Good Dairy	Annaville, PA
Kay-Ron Allstar Honey-Red	Plenty-Good Dairy	Annaville, PA
Plenty-Good Ross Indy-Red	Plenty-Good Dairy	Annaville, PA
Plenty-Good Pro Eve-Rc	Plenty-Good Dairy	Annaville, PA
Plenty-Good Mystic Sherona-Red	Plenty-Good Dairy	Annaville, PA
Plenty-Good Rainman Speckle-Rc	Plenty-Good Dairy	Annaville, PA

American Lineback Cattle Registry

2017 Lineback Shows Pennsylvania

June 20-24, 2017 Schnecksville Community Fair Schnecksville, PA www.schnecksvillefair.com	August 14-19, 2017 Kutztown Fair Kutztown, PA www.kutztownfairgrounds.com
July 10-15, 2017 Mason Dixon Fair Delta, PA www.masondixonfair.com	August 18-26, 2017 Westmoreland Fair Greensburg, PA www.westmorelandfair.com
July 22-29, 2017 Lebanon Area Fair Lebanon, PA www.lebanonareafair.com	August 18-26, 2017 Centre County Grange Fair Centre Hall, PA www.grangefair.com
July 24-29, 2017 Troy Fair Troy, PA www.troyfair.com	August 21-26, 2017 Elizabethtown Fair Elizabethtown, PA www.ETownFair.org
July 24-29, 2017 Kimberton Fair Kimberton, PA www.kimbertonfair.org	August 22-26, 2017 Hookstown Fair Hookstown, PA www.hookstownfair.com
July 31- August 4, 2017 Morrisons Cove Dairy Show Martinsburg, PA tritchey@springcovesd.org	August 28- September 2, 2017 Wattsburg Erie County Fair Wattsburg, PA www.wattsburgfair.com
July 31- August 5, 2017 Goshen Country Fair West Chester, PA www.goshencountryfair.com	August 30- September 4, 2017 Sullivan County Fair Forksville, PA www.sullivancountyfair.com
July 31-August 5, 2017 Schuylkill County Fair Summit Station, PA www.schuylkillfair.com	September 12-16, 2017 Albion Area Fair Albion, PA www.albionfair.com
August 6-12, 2017 Reading Fair Reading, PA www.thereadingfair.org	September 17-23, 2017 Beaver Community Fair Beaver Springs, PA www.beaverfair.org
August 6-12, 2017 Union County West End Fair Laurelton, PA www.ucwef.com	September 20-22, 2017 Solanco Fair Quarryville, PA www.solancofair.com
August 6-12, 2017 Huntingdon County Fair Huntingdon, PA www.huntingdoncountyfair.com	September 26-30, 2017 Ephrata Fair Ephrata, PA www.ephratafair.org
August 7-12, 2017 Tioga County Fair Whitneyville, PA www.tiogacountyfair.com	September 27-29, 2017 West Lampeter Fair Lancaster, PA www.westlampeterfair.com
August 8-12, 2017 Warren County Fair Pittsfield, PA www.warrencountyfair.net	October 6-8, 2017 Unionville Community Fair Kennett Square, PA www.ucfairinc.org

Thank you to those who contributed information, if your show is missing please get in contact! Send information to betweenthehines1985@gmail.com or call Deidra Bollinger (717)342-4882.

Please recognize that some of the shows, Linebacks are recognized as "Other Breeds," or "Commercial," or "Any Other Breed," etc., as well some are limited to Youth only. Be sure to contact the Dairy Superintendant for the respective fair you are interested in exhibiting at. This is a step in the right direction to having Lineback breed specific shows at more fairs for both youth and open exhibitors. Regardless of a Linebacks eligibility at a Fair or Show, the ALCR recommends having an Official Registration Paper.

American Lineback Cattle Registry

2017 Shows for Linebacks (By State, By Date)

<i>Wisconsin</i>	<i>Maryland</i>
June 22-25, 2017 Elroy Fair Elroy, WI www.Elroyfair.webs.com	July 15-22, 2017 Washington County Ag Expo & Fair Boonsboro, MD www.agexpoandfair.org
July 12-16, 2017 Northern Wisconsin State Fair Chippewa Falls, WI www.nwsfa.com	July 21-29, 2017 Cecil County Fair Elkton, MD www.cecilcountyfair.org
July 26-30, 2017 Langlade County Fair Antigo, WI www.langladecountyfair.com	August 5, 2017 Hereford Junior Farm Fair Cockeysville, MD www.herefordjrfarmfair.com
July 26-30, 2017 Dunn County Fair Menomonie, WI www.dunncountyfair.com	<i>Vermont</i>
July 25-30, 2017 Washington County Fair West Bend, WI www.wcfairpark.com	August 15-19, 2017 Vermont State Fair Rutland, VT www.vermontstatefair.org
July 27-30, 2017 Washburn County Fair Spooner, WI www.washburncountyfair.com	<i>Massachusetts</i>
August 1-6, 2017 Wisconsin Valley Fair Wausau, WI www.wisconsinvalleyfair.com	August 5-7, 2017 Adams Agricultural Fair Adams, MA www.adams-agricultural-fair.org
August 3-13, 2017 Wisconsin State Fair West Allis, WI www.wistatefair.com	August 11-13, 2017 The Bolton Fair Lancaster, MA www.boltonfair.org
August 10-13, 2017 Pierce County Fair Ellsworth, WI www.co.pierce.wi.us	August 18-27, 2017 Marshfield Fair Marshfield, MA www.marshfieldfair.org
August 16-20, 2017 Brown County Fair De Pere, WI www.browncountyfair.com	<i>New Hampshire</i>
August 23-27, 2017 Waupaca County Fair Weyauwega, WI www.waupacacountyfair.org	September 8-10, 2017 Hillsborough County Agricultural Fair New Boston, NH www.hcafair.com
August 30- September 4, 2017 Shawano County Fair Shawano, WI www.shawanocountyfair.net	

Composite Dairy Cattle Registry Update

Lineback registrations and new members are increasing. We have updated the americanlinebacks.net website with updated forms and information.

For those registering animals it is important to remember that we DO NOT accept entries on registration applications of "Grade Holstein" or "Grade" animal of any breed. If you DHI test, we need the ID number that is associated with that animal. If you are not on DHI test, we need a date of birth for the animal and any additional pedigree information you can provide. There is a pedigree form on the website that can be used for additional pedigree information.

When registrations are received with incomplete information it takes additional time for us to contact you and have you provide the additional information. This greatly slows down the registration process and with registrations for the breeds

...Continued on page 9...

American Lineback Cattle Registry

2017 Lineback Shows New York

July 6-9, 2017 Madison County Fair Brookfield, NY www.madisoncountyfairny.com
July 11-15, 2017 Yates County Fair Penn Yan, NY www.yatescountyfair.org
July 11-16, 2017 Jefferson County Fair Watertown, NY www.jeffcofair.org
July 17-22, 2017 Genesee County Fair Batavia, NY www.gcfair.com
July 17-22, 2017 Allegany County Fair Angelica, NY www.alleganycountyfair.org
July 18-22, 2017 Hemlock "Little World's Fair" Hemlock, NY www.hemlockfair.org
July 24-30, 2017 Chautauqua County Fair Dunkirk, NY www.chautauquacountyfair.org
July 28-30, 2017 Monroe County Agricultural Fair Spencerport, NY www.mcfair.com
July 31- August 6, 2017 Cattaraugus County Fair Little Valley, NY www.cattarauguscofair.com
August 1-6, 2017 Ulster County Fair New Platz, NY www.ulstercountyfair.com
August 1-6, 2017 Otsego County Fair Morris, NY www.otsegocountyfair.org
August 2-6, 2017 Niagara County Fair Lockport, NY www.ccenigaracounty.org
August 9-20, 2017 Erie County Fair Hamburg, NY www.ecfair.org
August 15-20, 2017 Herkimer County Fair Frankfort, NY www.herkimercountyfair.org
August 15-20, 2017 Steuben County Fair Bath, NY www.steubencountyfair.org
August 30- September 4, 2017 Great Schaghticoke Fair Schaghticoke, NY www.schaghticokefair.com

Silent Auction benefits Juniors

During the National Sale a Silent Auction was held to benefit future Junior Activities. There were more than a dozen items donated by various Lineback breeders and enthusiasts, which raised more than \$270.00!

Thank-you Donors:

Barb & John Hammarlund, Blossomelle Dairy, Katelyn Callahan, Plenty-Good Dairy, Pocopson Meadow Farm, Pretty Stitches Linebacks, Ruby's Sewing etc.

Thank-you Silent Auction Bidders!

A special thank-you to past Director, Ruby Bollinger for all her work and time to put together this Silent Auction and past auctions!



American Lineback Cattle Registry

...Continued from page 7...Composite Dairy Cattle Registry Update

that we represent on the increase this slows down the whole process. Please help us by being as thorough as possible when registering animals.

If you have registered animals and have previously provided the parentage, you do not need to complete it on every registration application. We have most all of the AI bulls in the database so you do not need to enter their sire or dam.

For the 2 photos that are required for registration, many of you are taking them with a smart phone. We are able to ACCEPT pictures directly taken from your smart phone. They can be emailed from your smart phone directly to us at alcr@americanlinebacks.net or they can be sent via text message to us, (816)738-4179. Please be sure to include the animal's name with the pictures.

Also, if you are on DHI test, there is an error report that we can access from the CDCB (Council on Dairy Cattle Breeding). We are seeing many errors on not only Lineback animals but other animals as well, including incorrect or missing ID numbers, missing parentage information or in some cases an ID number that has already been assigned to another animal.

If you would like for us to review the errors on your herd, please email us your DHI Herd Code Number. We have worked with several herds and working on more herds and we estimate that we will add close to 100,000 corrected animal identifications to the CDCB. This includes correcting or adding animal ID, sire information and dam information.

All of this information is important because it is used in providing genetic evaluations for your animals, and animals with correct parentage information are also used in the Sire evaluations.

For those interested in genomic testing or A2 testing, as the Composite Dairy Cattle Registry, we use GeneSeek/Neogen for processing those tests. The recommended test at this time for Lineback animals is the Basic Test, which covers about 15 traits: Milk, Fat, Protein, among them. For a complete list of the traits that this test covers, please visit our website www.dairycattleregistry.com and click on "Genomics" towards the bottom on the home page and it will provide you with the information and the forms. If you have any questions or need some assistance, please contact us. There is a possibility that some Lineback animals may qualify for other test options; to better determine those options, please contact us.

Summer show season is here and we want to wish everyone a successful 2017 show season, and may all your ribbons be blue!



Composite Dairy Cattle Registry

P.O. Box 118, Bulter, MO 64730

-Phone (816) 738-4179 -Fax (660) 200-7211

alcr@americanlinebacks.net www.dairycattleregistry.com

2017 Membership Application: Now available to be completed online!

Complete Application, Cut Along Dotted Line, Must send with Appropriate Fees



_____ New Member _____ Membership Renewal (Member No. _____)

Name(s): _____

Address: _____

City: _____ State: _____ Zip Code: _____

Phone H/C: _____ Fax: _____

Email: _____

_____ Yes, I would like to receive the "Between the Lines" Newsletter via email.

Membership Type (Check One):

_____ A) Junior Membership (under 21) – a one-time fee of \$20.00

***MUST** include date of birth: _____

_____ B) Individual (with Spouse) - \$20.00

_____ C) Family/Farm - \$30.00

***MUST** include Name(s) & Birthdate(s) of children under 21:

Name: _____ Birthdate: _____

Name: _____ Birthdate: _____

Name: _____ Birthdate: _____

Name: _____ Birthdate: _____

_____ D) Lifetime Membership - \$300.00

Make Checks Payable: **ALCR**
Mail Form & Payment:
**Composite Dairy Cattle
Registry/ALCR
P.O. Box 118
Butler, MO 64730**

****Memberships expire December 31st
of each year.**

****Memberships must be paid 30 days
prior to National Annual Meeting in
order to having Voting Privileges.**

2017 Registry Events

- Registration Moratorium
October 1st, - December 31st, 2017

Membership Benefits

- Voting Privileges
- Lineback Promotion
- Tri-Yearly Newsletter
- Reduced Rates:
Registering & Transferring Linebacks

Have you visited our website?

Check for additional Lineback updates!

www.americanlinebacks.net

**American Lineback
Cattle Registry**



Between the Lines Editor
Deidra Bollinger
265 Cold Spring Road
Elizabethtown, Pennsylvania 17022

Postage