

Between the Lines

Volume 16, Issue 1

The Lineback Newsletter

Spring 2014

ALDCR Officers & Directors

President:

Nedra Yoder-Koller
68 Hecktown Road
Shoemakersville, PA 19555

Vice President:

Jason Heeter
19072 Shade Valley Rd.
Shade Gap, PA 17255
heeter2000@yahoo.com

Secretary:

CarolAnn Bashore
513 Union Rd.
Lebanon, PA 17046
dcbashore@comcast.net

Treasurer:

Don Bashore
513 Union Rd.
Lebanon, PA 17046
dcbashore@comcast.net

Registrar:

Marjorie Kuszlyk
7982 Batavia Bryon Rd.
Batavia, NY 14020
585.343.4800

Newsletter Editor & Website Manager

Royell Bashore
10458 Jonestown Rd.
Annville, PA 17003
717.865.3161
royellbashore@yahoo.com

**A LIST OF ALDCR DIRECTORS CAN BE
FOUND ON PAGE 10**

Gone But Not Forgotten



**This Issue of "Between the Lines" is dedicated in memory of
Jr. member**

Andy R. Pownall

August 17, 1993—December 25, 2013

Read more about Andy on Page 7

Inside this issue:

President's Letter	2
Featured Bull	2
Something Unbelievably	3
Annual Lineback Show & Sale	4,
Annual Meeting/LB Judging Practice	5
Members in the Spotlight	6, 7
Gone but Not Forgotten	7
Photo Contest/New Members	8
F.Y.I./Registration Rates	9

**IF YOU DIDN'T ALREADY, MARK YOUR CALENDAR FOR THE NATIONAL JR. SHOW
AND THE 22nd ANNUAL LINEBACK SALE!!!**

MAY 17TH

SHOW 9AM~SALE 12NOON~ANNUAL MEMBER MEETING (30 MINS. AFTER SALE)

***Please consider staying for the meeting, many things need to be discussed and we would appreciate your input. We will also be voting for 2 new Directors as well as officers.**

(Read more on page 4,5)

HAVE YOU RENEWED YOUR YEARLY MEMBERSHIP????

2014 Memberships should be renewed ASAP!!

***You can find one online at www.americanlinebacks.com**

or call a director to get one mailed to you!





A Message from the ALDCR President



Another year is "in the books"; I truly hope it was a good one for each and every one of you. At the present time, there is guarded optimism for the dairy industry. Milk prices have improved, let's hope they stay around for a good long time. Additionally, the forecast is for operating expenses to not concurrently sky rocket, but we all know how quickly things can change.

Last year at this same time, I posed several questions to the membership, regarding the future of the ALDCR. Have you given serious thought about embracing the organization and are you willing to help it move forward? I have heard some say, "We are moving forward, if only at a snail's pace." I remind you, *Rome was not built in a day....and all good things do take time.* With "positive" energy and active participation from all members we can continue to make it happen!

Spring has sprung....it is time for our Annual National ALDCR Sale, Show and meeting. I look forward to seeing as many members there as possible. I ask that you provide support to the youth, as they represent the future of this dairy breed. Consider consigning an outstanding animal from your herd. It is an excellent way to show case the efforts you've put into your breeding program. During the meeting we will be selecting 2 Board of Directors and will be electing officers, so plan to attend and cast your votes.

I challenge you to seize this opportunity: Please consider stepping up and lend a helping hand....both committees would appreciate **any** assistance you would give them to make the 2014 National events successful!

Please contact (as soon as possible) the committee chairs

Barnard Bailey- (484-883-2819) to offer sale consignments and/or to volunteer to help on the sale committee.

Nedra Koller- (610-823-3552) to make monetary or other donations, offer class sponsorships and/or volunteer to help with the show committee.

Nedra Koller

FEATURED BULL

Nowadays you can find multiple, Lineback Bulls with Semen available, from Taurus Service or privately collected, all stemming from different bloodlines and dairy breeds, there are a few bulls like "C&A Abraham", who you could say helped to "father" the Lineback dairy cattle breed. Although, semen is no longer available from "Abraham", multiple cows, (undoubtedly, older cows) have "Abraham" lineage.

For those of you not familiar with "C&A Abraham", he was bred and raised by ALDCR members Carl and Ann Van Gheem of Shawano WI, and later owned by Taurus Service Inc. The Van Gheems had been breeding their own Linebacks since 1988. But Carl's dad and grandfather had started breeding them in the 1930's.

"Abraham" was the offspring from two of the best cows Carl and Ann had on their farm.

Abraham's sire "Cash" was from an exceptional cow. Her production was the top of their herd for 4 consecutive years. She also had ideal form, with strong dairy qualities through out. The Van Gheems took "Cash" and bred him to their 2nd best cow. This cow also had exceptional form, excellent production and had two daughters who received several blue ribbons at the local fair.

"Abraham wasn't necessarily a show bull, but he did wonders for helping the Lineback breed increase their milk production! He was defiantly a bull you could breed away from." Says a long time Lineback breeder and enthusiast who has used bulls like "Abraham" and his sire "Cash".

(Article info collected from "Between the Lines" Volume 5- Issue 1 by Ann Van Gheem)



C&A ABRAHAM

(Classic White Witrick)

Fourth generation of Registered Linebacks

The "Between the Lines" newsletter is in need of Featured Bulls for the up-coming newsletters!!

All that's needed is a picture of the bull, a full pedigree, a back story on the cow family (if possible), your own opinions about your bull, any additional info you can provide and a few sentences about yourself and/or family or farm.

Info. can be sent back in a detailed format, and the Editor will put it together OR you can type it as you wish.

All info should be sent to the ALDCR newsletter editor Royell Bashore (mailing info on cover)

"Something Unbelievable"

By Deidra Bollinger



Deidra & Shay at Pa Farm Show 2014

As Gandhi once said, "Be the change you wish to see in the world." Pretty Stitches Linebacks, wants to help be that change. Our goal is to help change the perception of the Lineback breed by showing and exhibiting only the highest quality Linebacks. Nearly three years ago, we had the crazy idea to dual register our "red speckles" in the Red and White Dairy Cattle Association and continue to register with the American Lineback Dairy Cattle Registry too. In addition to Linebacks, we also raise and show Holsteins (black and red) and Jerseys under Darr-Lynn.

During the 2012 show year, Pretty Stitches Dem. Shay Rouge-RED (sired by Scientific Demello-ET-RC) more commonly known as "Shay," showed as a March 25th spring calf. Throughout the whole summer she was an undefeated Lineback showing against nearly 25 other spring calves at the various shows.

Our family began to wonder, "Did we really have an amazing calf?" After much deliberation and seeking advice from fellow dairymen, we decided to enter her as a Red and White for the 2013 Pennsylvania Farm Show. If you recall, Shay was recognized in the newsletter last year for placing 4th in the Red and White Spring Calf class, judged by Bryant Hlavaty. The 2013 show season went on to be a success as well for Shay, again being undefeated as a Spring Yearling in the Lineback breed. We decided, we had already tried it once, why not again. Shay was entered to show as a Red and White Spring Yearling at the 2014 Pennsylvania Farm Show. Just like the year before, we went into Farm Show with no expectations.



Dam & Daughter Lebanon Area Fair

Nearly missing the spring yearling class, Shay was pulled out of the shoot getting her topline finished and we sprinted up the spine. For those of you unfamiliar with the Farm Show Complex, exhibitors use a limited access path to get to the show ring, and we got there just in time to be the last ones walking in the ring. This was when things began happening we were not expecting, Shay was motioned into first place, where she stayed. Placing first was kind of a big deal...no, no it was a huge deal; a red Lineback just won the Spring yearling class!

Waiting a few moments to catch up with what just happened; we were headed back into the ring for Junior Champion selection. Again, things began to happen that we were not expecting. Shay was one of four heifer's judge, Thomas Uber, pulled out for his selection of Junior Champion. Pretty Stitches Dem. Shay Rouge-RED was named the 2014 Pennsylvania Farm Show Red & White Reserve Junior Champion!

Pretty Stitches Linebacks had just accomplished something unbelievable, for our beloved breed and a first for our family!



Pretty Stitches Linebacks

Darryl, Ruby & Deidra Bollinger

"High Quality Show Heifers & Breeding Stock"

265 Cold Spring Road Elizabethtown, Pennsylvania 17022

Deidra's Cell (717)342-4882 Ruby's Cell (717)629-2240
d_e_bollinger@hotmail.com

We are excited for Shay Rouge to calve in June; she is due to Maple Dale Cowboy Max-RC!

Show Highlights

2012

National Lineback Junior Show

- 1st Spring Calf
- 1st Dam & Daughter
- Lebanon Area Fair
- 1st Spring Calf

Tioga County Fair

- 1st Spring Calf & Junior Champion
- 1st Dam & Daughter
- Elizabethtown Fair
- 1st Spring Calf

2013

Pennsylvania Farm Show

- 4th Spring Calf (Red & White)

National Lineback Junior Show

- 1st Spring Yearling
- 1st Dam & Daughter

Lebanon Area Fair

- 1st Spring Yearling & Junior Champion
- 1st Dam & Daughter

Elizabethtown Fair

- 1st Spring Yearling & Junior Champion



2014

Pennsylvania Farm Show

- 1st Spring Yearling
- RESERVE JUNIOR CHAMPION (Red & White)

CONGRATES DEIDRA AND SHAY! WAY TO PROMOTE THE AMERICAN LINEBACK BREED!!

2014 National American Lineback Dairy Cattle Jr. Show (9am)

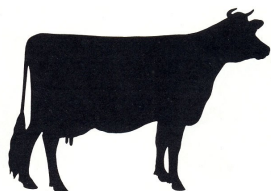
&

22nd Annual National Lineback Sale (12noon)

Followed by

Annual Lineback Member Meeting

(30 minutes following the end of the sale)



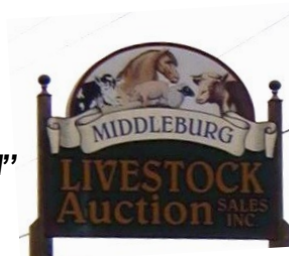
MARK YOUR CALENDARS!!!

MAY 17, 2013

AT

"MIDDLEBURG LIVESTOCK AUCTION"

MIDDLEBURG, PA



Consignments are need for the 2014 Annual Lineback Sale!!! The approximation is 60 head of Quality Linebacks; Show Calves, Springers, Fresh Cows, and a few Breeding Bulls.

THERES SOMETHING FOR EVERYONE!!!

***Lineback breeders will have semen available, so don't forget to BRING YOUR TANK!!**

GPS- 6592 Route 522

Middleburg, PA 17842

Directions can also be found on the website
(there is a link on "NATIONAL SALE" page)

SPRING SALE RULES

- You do **NOT** need to be a member to consign animals to the 2013 Nat'l Sale.
- The sale manger has the right to refuse any animal consigned to the sale (this includes after delivery of the animal to the sale barn).
- Animals being shown in the National Jr. Show, may also be consigned to the sale.
- **NO OUTSTANDING** bills from consigners.
- All animals **MUST** be registered (except animals under the age of 2 weeks.)
- All animals **MUST** be accompanied by health charts and proper vaccinations'.
- All bulls consigned must be of a "B" Class or above and **MUST** be accompanied by a female.
- Any animal over 6 months consigned to the sale **MUST** be cleaned and clipped; OR arrangements made to complete before the auction begins. If not, subject to; \$25.00 fitting fee.
- Verbal announcements to take precedence over the matter of print in the catalog.
- ALL payments must be made to the sale clerk, before the loading of any animals takes place.
- Out of state buyers must have a bank letter of credit or certified check for purchases at sale.
- Seller will pay for Transfer Fee.

FEEL FREE TO CONTACT A SALE COMMITTEE MEMBER WITH ANY QUESTIONS!

Sale Chairman- Bernard Bailly- 484-883-2819

Marjorie Kuszlyk- 585-343-4800



Any boys or girls ages 8-21(as of January 1st) that are Jr. Members of the ALDCR are invited to enter there Linebacks at the 2014 National Jr. Show!

***The National Jr. Show is to be held in conjunction with the
Annual Sale on Saturday, May17th, starting promptly at 9am,
followed by the Sale at noon**

Looking for information or have a question about the 2014 National Jr. Show ??

PLEASE contact President- Nedra Koller at 610.926.1523 OR check Website

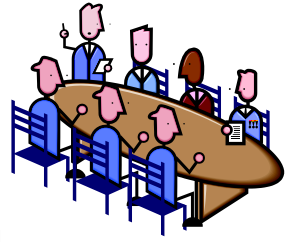
www.americanlinebacks.com

Info will be added to website and the group Facebook page as it becomes available



2014 National Jr. Show, Sale and Meeting

Continued...



Have you ever attended a Annual Member Meeting? No, not even one? Well why not?!

The Annual Member Meeting will be held approximately a half an hour, after the Nat'l Sale in the sale barn. Members are thoroughly encouraged to attend the Annual Member Meeting. We will be discussing important topics and we would appreciate your input. We also will be voting for 2 new directors and officers! We hope you will consider staying for the meeting!

**The ALDCR is at a turning point in the association, please don't miss out on these opportunities to help pave and further improve the future of our organization. It's a time like this when we need to come together as a group and listen, discuss each others ideas, opinions and goals for the ALDCR. This is why your input is needed! This year we're looking for some new faces and new ideas/opinions.*

Please come and exercise your voting rights and "let your voice be heard"!



Craft Auction

In the past we have held a Craft Auction at the National Lineback sale, where we have sold a few donated items. This year, we would like to continue that tradition! That being said, we will be looking for anyone who would be willing to donate any items! All proceeds will go toward the National Lineback Jr. Show Fund.

Examples of items we've had in the past; homemade craft, cow/dairy related, farm related, Lineback apparel, bull semen.

If your craft "challenged", maybe you can beg for a donation from your local dairy supply store!

Besides "cow" or crafty item, donations of halters, grooming tools, buckets etc.. Are always received well.

Whatever you donation you provide will be appreciated! Bring your items with on May 17th!

Lineback Dairy Judging Practice



In March, Plenty-Good Dairy, (the Bashore's) of Jonestown PA, were asked to host a "Judging Practice Night" at their farm, for 4-H Lebanon County Dairy Judging. They were asked to put two classes together, they came up with an aged class and a two year old. The aged cows consisted of four of the



Bashore's best Lineback aged cows.

This year was a year for the books, because it was the first year 4-H Lebanon County Dairy Judging, got a chance to judge Linebacks! Kids, parents, and coaches showed up that evening, for a night of judging.

The class was placed 2-1-3-4, it was a class that challenged the young 4-H'ers to use their judging knowledge. Due to their similarities.

Coach Allen Hostetter, official judge, said "All four cows are exceptional for their age, with strength, desirable mammary systems, and stand on correct feet & legs."



~Thanks to the Bashore's for their continued help in promoting the Lineback breed!

Member Spotlight

AYR-BACK FARMS

Joe Stowe and Family

As a young 4-Her, ALDCR member- Joe Stowe, was interested in get getting more involved in a dairy 4-H project. It was Barnard Bailly of "Pocopson Meadow Farm" who was more than willing to help this young boy get his start in the dairy industry! Of course, Barnard started him out with a Lineback heifer as a 4-H project. Her name was "Pocopson Meadow L208", or "Lionel". She lived to be 14 years old, and went EX-91 at 12 years old! "Lionel" also was the start of many of Joe's greatest Lineback animals!

Many years later, after several years of working and building up his herd, with the help of family and friends, Joe finally got the chance to start milking, in the summer of 2008. Joe Stowe, now resides in Oxford, located in Chester County, Pennsylvania. He is the owner of "Ayr-Back Farms", along with his Dad Charles Stowe; Nephews, Jarod and Logan Stowe and Matthew Holbrook.

The prefix "Ayr-Back" was brought about because the cattle shown by the family are Ayrshires and Linebacks. Although there are currently 19 milking Linebacks, with 23 on test, at "Ayr-Back Farms"; Linebacks and Ayrshires are not the only breeds in the barn. Other breeds include, Registered Holsteins and Jerseys, which makes a grand total of 72 cows milking, 96 on test.



Grazing heifers

Currently, the Stowes, have 6 cows milking over 100lbs. Their top Lineback cow in February was "Pocopson Meadow Surprise-Red", purchased at the 2012 National Sale. She gave 116lbs. 3.8F 3.0P. At "Ayr-Back Farms" the overall herd is averaged at 67lbs. 4.1F 3.4P projected at-19,716. Their Linebacks are not on a separate test,

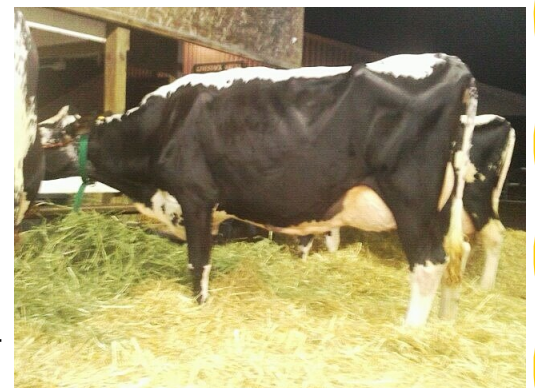
but by their math they are currently averaging at 76lbs. 4.1F 3.3P projected at- 21,208. They also take pride in keeping a low SCC at under 100,000!!

The top Lineback Sires of the milking cows at "Ayr-Back Farms", are sired by "Copenhagen", "Chipper Joe", "Russ", "Herve-Red", and "Cowboy Max". Their highest scored Lineback is sired by a home-bred bull "Ayr-Back Lone Wolff Micky" (unfortunately he was never collected). Currently they're using semen from the following sires on their Linebacks, "Mystic-Red", "Halfback-P-Red", "Shotline-RC", and "Pro-RC". Joe said, "We are also experimenting with high type and high production Holstein bulls on some of our better Linebacks!"

In January, "Ayr-Back Farms" averaged VG-85, for Lineback Classification. Their top cow is "Ayr-Back Micky-211" who was bumped up to EX-91! "Micky" also has a breeding age son that is For Sale, he is a "Freeze" son. (Freeze is a ABS Holstein bull out of the great "Frosty" cow that was supreme at Madison. If interested please call Joe at 443.907.3613). "Ayr-Back Farms" said, "Our congratulations go to Jarod Stowe on his first 4-H project "Ayr-Back Herve Naura" who is now VG-87!!"



L-R, Chuck, Joe and Jarod



"Ayr-Back Micky-211"

Member Spotlight

(Continued)

Joe and his nephews, Jarod, Logan and Matthew, showed at the "2013 Cecil County Fair and between the boys, they had received Grand and Reserve Grand in 4-H and Open! They also showed at the 2013 National Jr. Lineback Show, Matthew, had



Honorable Mention Jr. Champion with "Ayr-Back My Lucky Lady" and Jarod, had 1st winter yearling with, "Ayr-Back Kamp Liberty" (both heifers go back to Joe's original Lineback, "Lionel").



Joe said, "My goal is to continue improving the type and production of my Linebacks and to expand my marketing of my Lineback offspring so I can in turn share the enjoyment of this profitable breed and to help it grow!"



Gone but Not Forgotten

Andy R. Pownall

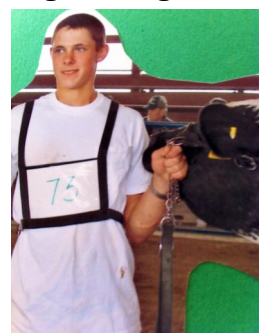
August 17, 1993—December 25, 2013

Andy Robert Pownall, 20, of Quarryville, entered into rest on December 25, 2013, as the result of an automobile accident. He was the son of James Findley and Betsy Pownall.

In addition to his parents, he is survived by a sister, Amber Pownall; brother, Lane and sister, Lexi Findley; step-mother, Crystal Findley; maternal grandparents, Walter and Peggy Pownall and paternal grandparents, Ken and Kathy Findley; along with several aunts and uncles.

He was a 2011 graduate of Solanco High School in Lancaster County, Pennsylvania Andy was a welder and worked for Tait Towers in Lititz, Pa. He was a former member of the 4-H Club of Lancaster Co. Milk Duds Dairy Club, Boy Scout Troop #91 and the Lancaster County Junior Holstein Club. He enjoyed hunting, fishing and being outdoors.

(Intelligencer Journal/Lancaster New Era)



Editor's note:

Andy was a son, brother and personal friend. He was an active junior member of the ALDCR, showing multiple years at the National Jr. Lineback Dairy Show(s). He had quite the personality, loved to make people laugh (he was very good at it) and he always had a "goofy" smile on his face.

His mother, Besty Pownall, was willing to lend a hand in 2013, for the ALDCR Jr. Show, and both Andy and his sister, Amber showed their Linebacks. All three helped to make the National Jr. Lineback Show as awesome as it was! Andy is/will be greatly missed by family and friends.

The ALDCR Officers and Board of Directors would like to extend their deepest sympathy, for the Pownall and Findley families.

FLY HIGH ANDY



"Linebacks, Camera, Smile!" Photo Contest

This year were doing something new! A photo contest is being held from
Now until June 27th!

There will be 2 aged divisions; Youth (14 and under) and Adult (15 and up)

~Rules~

- ♦ ONE photo per member (this means each person from a paid family membership could send in a photo)
- ♦ The photo can be anything Lineback (dairy cattle) related (if not sure about your photo please call/email for clarification)
- ♦ You Must follow Photo guidelines -Matte and 5x7
- ♦ Photo must be your own
- ♦ Photo should be taken in the 2013-2014 years
- ♦ Photo can not be entered more than once.
- ♦ Do Not send your original copy of the photo, it will not be returned!
- ♦ The photo MUST to have a "Caption"
- ♦ Name, Age, Address and Phone number MUST accompany each photo
- ♦ To be entered photo must be post marked by JUNE 27TH!

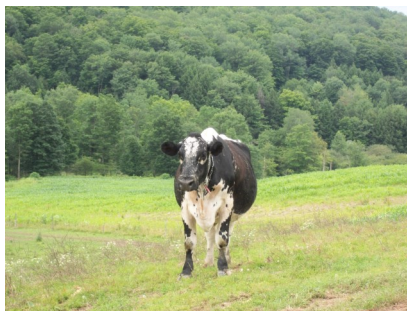
** 3 Winners from each division will receive **Special Prizes** -donated by multiple Lineback breeders and enthusiasts!

*** Photos can be mailed to Royell Bashore— 10458 Jonestown Rd. Annville, PA 17003 OR emailed to royellbashore@yahoo.com

**** Winning Photos will be published in the Next Issue of "Between the Lines"

We hope you will consider taking part in our photo contest!!

It's a simple and easy way to have fun AND you get a chance to win some awesome prizes!



WELCOME 2014 NEW MEMBERS!!

Lawrence Keyes
Jennifer Neiman
David Hazekamp

Wales, MA
Mertztown, PA
Jordanville, NY

Carlee Robbins(Y)
Aleah Copenhaver(Y)
Kenny Michel(Y)

Stillwater, OK
Lebanon, PA
Valley Falls, NY

FOR YOUR INFORMATION

- The next Classification of Linebacks, in PA, DE, MD, & NJ (done by the Brown Swiss Association) Will be in **June 2014**. PLEASE call- Leonard Johnson **ASAP** at **608.365.4474 (ext.12)** for more information!
- You had to have your membership renewed at least **30 days prior** of the Nat'l sale to have voting rights!

Registration Rates:

The current registration fees are based on the age of the animal. Below you can see it's very cost efficient to be a member.

	MEMBER	NON-
MEMBER		
0 to 6 months	\$ 8	\$16
6 to 12 months	\$10	\$20
12 to 24 months	\$14	\$28
24 months & up	\$20	\$40
Transfers	\$ 5	\$ 7

Rush Fee \$10 (anything less than 30 days)

Duplicate or Reprints \$5

PLEASE MAKE CHECK(S) TO THE ALDCR

Mail to: Marjorie Kuszlyk, 7982 Batavia-Byron Rd, Batavia, NY 14020



www.americanlinebacks.com

Have you Visited the Official ALDCR Website Lately ?? Its Newly Up-dated, with pictures, new pages, printable pdf. Files, A "Calendar of Events" and lots more!

***New dates** have been added to the **"Calendar of Events!!"**

***The ALDCR website has had a total of approximately 4500 views since 2014 began!**

FROM THE EDITORS DESK

Is it spring yet?? *"Hey, Mother Nature it would be nice to have all four seasons this year!"* I hope everyone had a great start to the year!

Well, it's National Show, Sale and Annual Meeting time. Its coming fast. May 17th, at Middleburg Livestock Auction its almost here, consignments are still needed, consider sponsoring the show! More info about the show will be posted to the website and Facebook as I receive it. NOTE; there will be an annual meeting, we will be voting for new directors and officers. If you have never attended one, please do. Its important everyone is present so you're up-to-date on current topics in the ALDCR and so you can help us pave the future of our organization, please DON'T miss out!! I hope to see everyone on the 17th of May! Good luck to all the Jr. members, at the Nat'l Jr. Show!

If you, or someone you know didn't already renew your ALDCR membership for 2014, please do so! Renewals were DUE in January! Applications can be found online.

The show season is soon to be upon us, if you're planning on attending a Lineback show to let me know so I can add it to our "Calendar of Events" online. This way others Lineback enthusiasts have an opportunity to show as well or come watch the show! Please don't forget to send in your Show Results and pictures for the website and newsletters!! Know a non-member who shows Linebacks? Let them know if they send me Lineback show results/pictures they will in return receive a Free Issue of "Between the Lines" !!!!!

Lastly, anyone interested in "Spotlight Member(s)" and/or "Featured Bull" we are needed of them for our upcoming Newsletters! PLEASE help us out by emailing for a questionnaire!! They also are available for print on the website.

****I can not stress enough that without equal participation and information, provided by officers, directors and members there will be NO future newsletters for me to edit together!!! So please call for or go online for the printed forms mentioned above!!**

Happy Easter!!

Royell Bashore

ALDCR Newsletter Editor
& Website Manager



Do you have a Facebook??? We do! So come **"Join us"!!** Communicate with other Lineback enthusiasts, share information and stay up-to-date on up coming events!! We currently have around **280 members** in our group and counting!

(You can quick find us, on the official website, by click the "Join Us on Facebook" button, located on the home page)

Don't forget to tell a friend!!



American Lineback Dairy Cattle Association

ALDCR Directors

Please feel free to contact any director with any and all questions!

Director: Bob Bashore
10458 Jonestown Rd.
Annville, PA 17003
717.865.3161
plentygood@comcast.net

Director: Brenda Leggett
471 Bower Road
Fredonia, PA 16124

Director: Don Bashore
513 Union Rd.
Lebanon, PA 17046
dcbashore@comcast.net

Director: John Kuszlyk
7982 Batavia Bryon Rd.
Batavia, NY 14020
585.343.4800

Director: Luke Harrison
Cambridge Springs, PA
814.490.7517

Director: Nedra Yoder-Koller
68 Hecktown Rd.
Shoemakersville, PA 19555

Director: Ruby Bollinger
265 Cold Spring Rd.
Elizabethtown, PA 17022



Don't
forget
to
spread
the
word
about
the
ALDCRI

Newsletter Submissions



The newsletter is printed in Pennsylvania
Tri-yearly.

Spring, Summer/Fall, Winter

Any materials or photos for submission should be sent
to

ALDCR Newsletter Editor Royell Bashore:

royellbashore@yahoo.com

or

mailed to; 10458 Jonestown Rd. Annville, PA 17003

Articles needed for the newsletters;

- Show Results

Please send us a short story or just details (along with a picture or two) on how you did showing your Linebacks.

- A Featured Bull

Each issue will feature a different bull, this can be any bull,
as long as there is semen available for purchase.

- Spotlight Members

Any member whatever your membership, JR, Family, Life-
time, etc. can be a spotlight member.

- Story/Info you'd like to Share

Anything you'd like to share, how you did classifying your
Linebacks; A interesting question you were asked about
Linebacks; etc. The possibilities are endless.

*Pictures are always needed of Lineback Cattle

Printable Membership Applications can be found online at
www.americanlinebacks.com

***DON'T FORGET TO SEND YOUR 2014 SHOW RESULTS & PICTURES. WE LIKE TO REPORT YOUR SUCCESS!**

ALDCR Newsletter Editor
Royell Bashore
10458 Jonestown Road
Annville, PA 17003